

**INSTRUMENT APPROACH CHART**

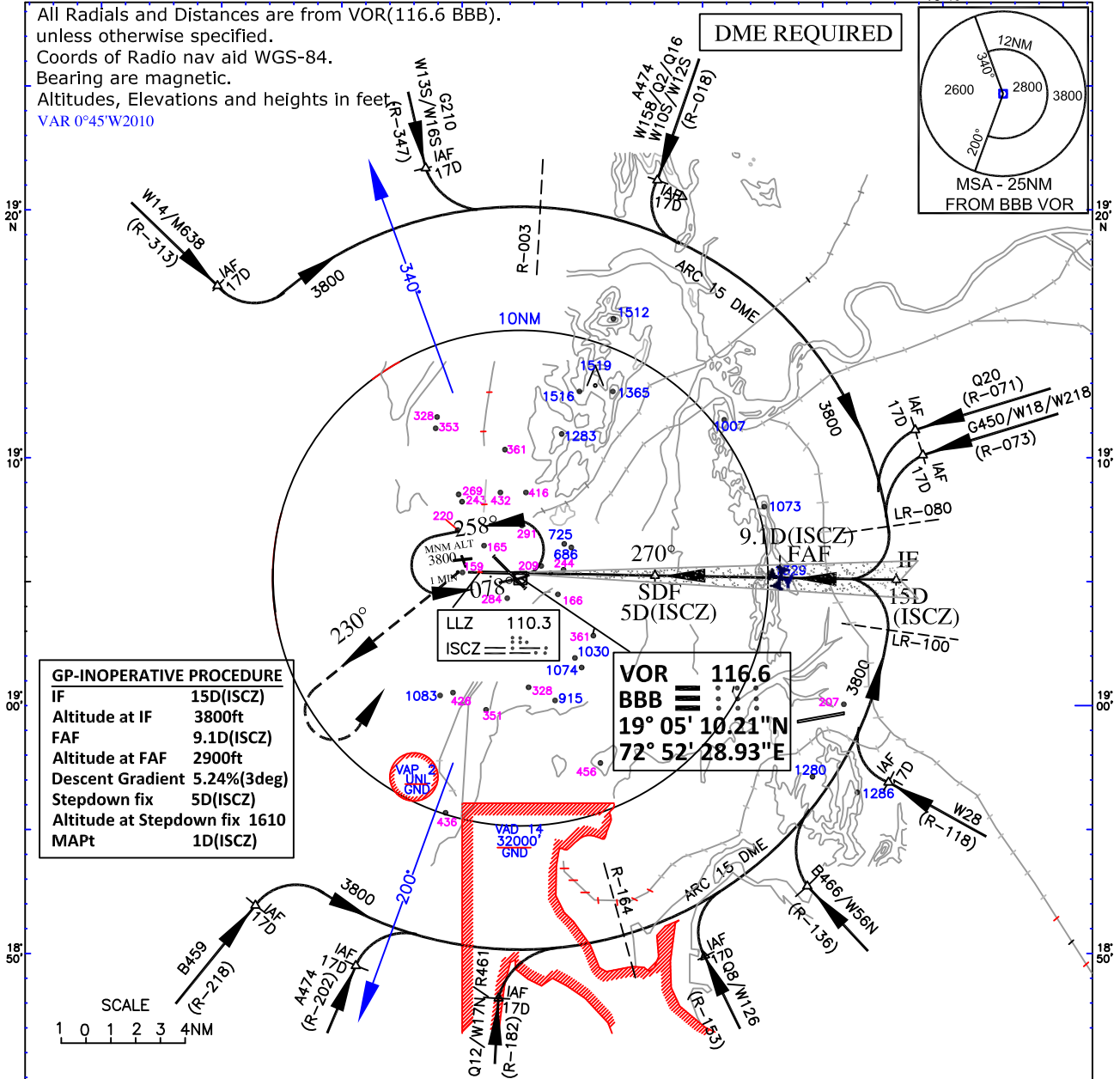
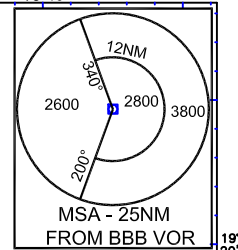
**AERODROME ELEV. 40Ft**  
**HEIGHT RELATED TO THR RWY 27 - ELEV. 23Ft**

APP 127.9  
TWR 118.1

**MUMBAI(VABB) INDIA**  
**ILS (Y) RWY 27**

All Radials and Distances are from VOR(116.6 BBB), unless otherwise specified.  
Coords of Radio nav aid WGS-84.  
Bearing are magnetic.  
Altitudes, Elevations and heights in feet  
VAR 0°45'W2010

**DME REQUIRED**



**GP-INOPERATIVE PROCEDURE**  
IF 15D(ISCZ)  
Altitude at IF 3800ft  
FAF 9.1D(ISCZ)  
Altitude at FAF 2900ft  
Descent Gradient 5.24%(3deg)  
Stepdown fix 5D(ISCZ)  
Altitude at Stepdown fix 1610  
MAPt 1D(ISCZ)

**VOR 116.6**  
**BBB**  
**19° 05' 10.21" N**  
**72° 52' 28.93" E**

Circling East of Rwy 14 and North of Rwy 27 of the intersecting Rwy 14 & 27 is prohibited.

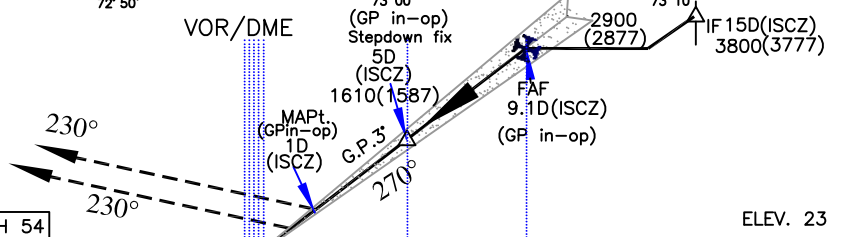
RADAR VECTORING MAY BE PROVIDED WI 12 NM AT 2600FT, PROVIDED INTERCEPTION OF LOC TAKES PLACE AT 10NM OR MORE FM TOUCHDOWN AND ANGLE OF INTERCEPTION WITH LOC SHALL BE 30 DEG OR LESS

ATC may clear within CTR an aircraft established on any radial other than the promulgated radial to join 15D VOR-DME arc procedure leading to ILS-DME procedure at or above 3800ft.

Transition Altitude 4000

**MISSED APPROACH**

Climb straight ahead to 700 ft, turn left heading H230 deg climbing to 2600 ft, then turn left to join VOR holding at 3800ft or as instructed by ATC.  
Not to Turn Before Threshold



NAUTICAL MILES FROM THR RWY 27

O C A (H)				Distance (ISCZ)/Altitude information for G.P.inoperative procedure								
CAT. OF AIRCRAFT	A/B	C	D	Distance(NM)	9.1D	8D	7D	6D	5D(SD)	4D	3D	2D
STRAIGHT-IN	230(207)	230(207)	230(207)	Altitude (ft.)	2900	2560	2250	1930	1610	1290	970	650
G.P.Inop procedure	540(517)	540(517)	540(517)	Rate of Descent /Ground speed information (G.P.in-op. procedure)								
				Ground speed (kt.)	80	100	120	140	160	180		
				Rate of descent (ft/min)	425	530	635	740	845	950		

DRG. NO. AAI/-IALC/04/15.07.2021